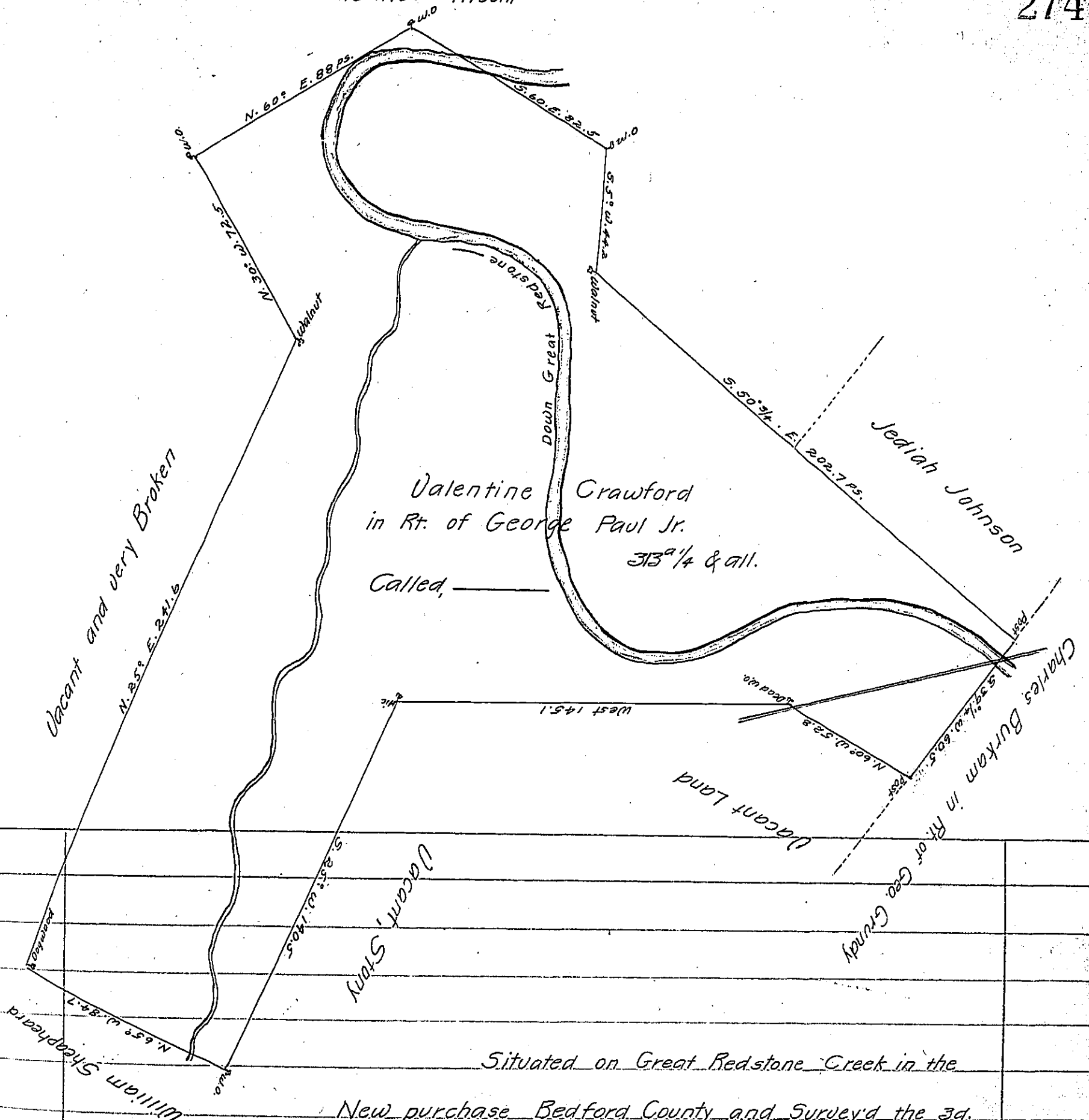


Silvanus Mount



Valentine Crawford  
 in Rt. of George Paul Jr.  
 313 1/4 & all.  
 Called \_\_\_\_\_

Situated on Great Redstone Creek in the

New purchase Bedford County and Survey'd the 3d.

day of July 1770 By Order of Survey No 3636 dated

the 10th. Day of July 1769.

By Moses M: Clean Dept.

To John Lukens Esqr.

Surveyor General

IN TESTIMONY that the above is a copy of the original remaining on file in the Department of Internal Affairs of Pennsylvania, made conformably to an Act of Assembly approved the 16th day of February, 1833, I have hereunto set my Hand and caused the Seal of said Department to be affixed at Harrisburg, this tenth day of December 1904

*Loae P. Brown*  
 Secretary of Internal Affairs